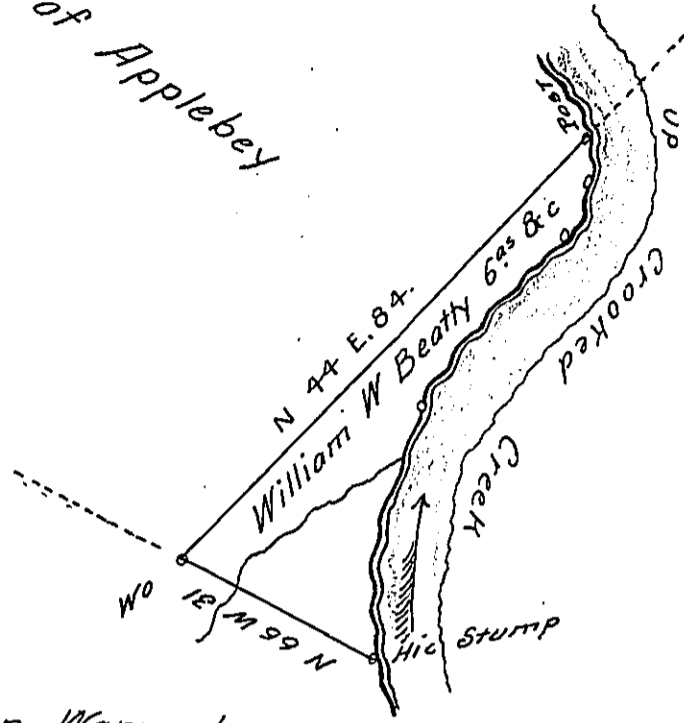


Manor of Applebey

Courses and dists up
Crook'd Creek.



S	7	E	5
S	25	W	9
S	59 1/2	W	31.5
S	11	W	36
Total 81.5			

John Pinkerton Warrantee

In pursuance of a warrant Granted to William W. Beatty da-
ted the 3rd day of December A.D. 1850

Surveyed to the same on the 9th day of December
1850 the above described tract of land containing Six acres and
Allowance of six per Cent. &c Situate in Allegheny Township Arm-
strong County

To Uno Laporte Esq
Surveyor General

For U. Boqgs D.S.
U. E. Meredith

I, U. Boqgs, Deputy Surveyor of Armstrong County do certify that I
have Examined the above return of Survey and find it correct

U. Boqgs D.S.

To Uno Laporte Esq
Surveyor General

9 December 1850

IN TESTIMONY that the above is a copy of the original remaining on file in
the Department of Internal Affairs of Pennsylvania, made
conformably to an Act of Assembly approved the 16th day of
February, 1833, I have hereunto set my Hand and caused
the Seal of said Department to be affixed at Harrisburg,
this eighth day of February 1904

George D. P. [Signature]
Secretary of Internal Affairs.